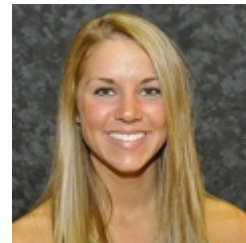


Bethel's Sheley headlines 2011-2012 Women's Basketball Awards

Posted: Feb 29, 2012

ST. PAUL, Minn. -- After the conclusion of a tremendous season, the top women's basketball performers in the Minnesota Intercollegiate Athletic Conference (MIAC) were honored Wednesday when the conference announced the 2012 MIAC Women's Basketball Awards, highlighted by three top individual honors and the All-Conference team.



Bethel senior **Taylor Sheley** (Backus, Minn./Pine River-Backus) took home the league's top honor as the 2011-12 MIAC Player-of-the-Year in a fitting close to her tremendous career for the Royals. Gustavus' **Kelsey Florian** (Roseville, Minn.) earned MIAC Sixth Player-of-the-Year honors for her contributions off the bench to the Gusties' 20-win season and, after a year that saw her team dominate the conference and put together an amazing winning streak, St. Thomas head coach **Ruth Sinn** was voted the MIAC Coach-of-the-Year by her peers.

Sheley added her Player-of-the-Year award to her third-straight All-MIAC selection after starting her career with All-First-Year Team honors. As a senior, the Royals' star contributed to her team's success in every way possible, as she ranked in the top 15 of almost every single statistical category. Sheley's play and leadership helped Bethel finish above .500 at 14-12 overall and 12-10 in conference play, including a trip to the 2012 MIAC Women's Basketball Playoffs.

Bethel's Taylor Sheley was named the MIAC Player-of-the-Year. (Photo courtesy of Bethel Sports Information)



The conference's leading scorer at 19.3 points per game, Sheley also ranked among the conference's best in free throw percentage (second, .810), 3-pointers (third, 2.12 per game), steals (fourth, 2.5 per game), minutes played (fifth, 33.81 per game) and she also ranked 12th in rebounding (5.9 per game), 14th in assists and 15th in 3-point percentage (.309) and blocked shots (0.77 per game). She was Bethel's leading scorer in 23 of its 26 games, topping the 20-point plateau 12 times, including a season-high 32 points in a two-point loss to conference champion St. Thomas on Jan. 16.

Florian made a huge impact off the bench for the Gusties, who finished the season 20-7, while going 17-5 in the MIAC to finish in second place. She also helped her team reach the 2012 MIAC Playoff championship game. The junior was Gustavus' third-leading scorer at 8.5 points per game to go along with 3.6 rebounds per game, 30 assists and 20 steals. She was even a little better against MIAC competition, scoring 8.8 points per game in conference play.

Sinn's sixth season as the Tommies' head coach will go down as one she will never forget. Her team lost its first game of the season - on the road at UW-Stevens Point in nonconference play - and hasn't been beaten since. UST enters the NCAA Division III Tournament with 26-straight wins and a 26-1 overall record. The Tommies will host the first two rounds of the D-III playoffs, where they are a perfect 13-0 this year. UST was also unblemished against MIAC opponents with a 22-0 regular season record to ear the regular season championship, and two more postseason wins to capture the MIAC Playoff title.

The Coach-of-the-Year honor is Sinn's second, to compliment her third MIAC regular season title and NCAA playoff berth, but this year's team dominated like no other with its perfect conference record. As further evidence, St. Thomas led the MIAC in scoring (67.0), defense (51.0), margin of victory (16.0), free throw percentage (.763), field goal percentage (.456), 3-point percentage (.359), assists (13.81) and assist-to-turnover ratio (.090). Sinn is a member of the school's Athletic Hall of Fame thanks to her playing career at UST that helped produce two MIAC titles and the school's first-ever trip to the NCAA Tournament.

Sheley was one of two players to receive MIAC All-Conference honors for the third-straight season, along with Gustavus guard **Molly Geske**. Both players were honored during all four seasons of their careers, as they were both members of the All-First-Year Team in 2008-09. Carleton's **Akemi Arouzman**, St. Olaf's **Mackenzie Wolter** and St. Thomas' **Taylor Young** all earned their second-straight All-MIAC honor. Last season's Sixth Player-of-the-Year, **Maggie Weiers** from St. Thomas, also joined the All-Conference team this season in a starting role.

The conference-champion Tommies led the way with three players on the All-Conference Team. Gustavus, Concordia and Saint Mary's - the other three semifinalists in the MIAC Playoffs - each had two selections, while St. Olaf, Bethel, Augsburg, Carleton and Macalester each had one player honored. The conference also released five-player All-Defensive and All-First-Year Teams. The defensive unit is highlighted by the second-straight selection for Gustavus' **Colleen Ruane**, who was also a member of the All-Conference team. The league also recognized an All-Conference Honorable Mention squad.

As part of a conference-wide sportsmanship initiative, the MIAC also announced the sixth annual All-MIAC Sportsmanship team for women's basketball. Members of the All-MIAC Sportsmanship team are selected by their coaches and teammates as individuals who demonstrate ideals of positive sportsmanship both on and off the field of competition.

2011-12 MIAC Women's Basketball Awards

Player-of-the-Year - Taylor Sheley, Bethel (Sr., Backus, Minn./Pine River-Backus)

Sixth Player-of-the-Year - Kelsey Florian, Gustavus (Jr., Roseville, Minn.)

Coach-of-the-Year - Ruth Sinn, St. Thomas (7th season)

2011-12 MIAC Women's Basketball All-Conference Team

Name	Team	Year	Position	Hometown/Previous School
Akemi Arzouman	Carleton	Jr.	Guard	Irvine, Calif./University
Whitney Canton	Saint Benedict	Jr.	Wing	Pine Island, Minn.
Molly Geske	Gustavus	Sr.	Guard	Mendota Hts, Minn./Cretin-Derham Hall
Serenae Levine	Augsburg	Sr.	Guard	Eden Prairie, Minn.
Colleen Ruane	Gustavus	Sr.	Guard	Edina, Minn./Benilde-St. Margaret's
Holly Schiedermayer	Macalester	Sr.	Forward	Waupaca, Minn.
Taylor Sheley	Bethel	Sr.	Guard	Backus, Minn./Pine River-Backus
Sarah Smith	St. Thomas	Sr.	Center	Grand Forks, N.D./Red River
Tricia Sorensen	Concordia	Jr.	Forward	Bismark, N.D./Century
Jamie Stefely	Saint Mary's	Jr.	Forward	Lisle, Ill./St. Francis
Emily Thesing	Concordia	Jr.	Guard	Brainerd, Minn.
Jessica Thone	Saint Mary's	Jr.	Guard	Woodbury, Minn.
Maggie Weiers	St. Thomas	So.	Center	New Prague, Minn.
Mackenzie Wolter	St. Olaf	Jr.	Guard	Norwood, Minn./Central
Taylor Young	St. Thomas	So.	Forward	Edina, Minn

2011-12 MIAC Women's Basketball All-Defensive Team

Name	Team	Year	Position	Hometown/Previous School
Kelly Brandenburg	St. Thomas	So.	Guard	Brookfield, Wis./Devine Savior
Courtney Euerle	Saint Mary's	So.	Post	Litchfield, Minn.
Colleen Ruane	Gustavus	Sr.	Guard	Edina, Minn./Benilde-St. Margaret's
Kelly Swenson	Bethel	Jr.	Guard	Dawson, Minn./Dawson-Boyd
Brittany Webber	St. Olaf	So.	Guard	St. Louis Park, Minn./Lion's Gate Academy

2011-12 MIAC Women's Basketball All-First-Year Team

Name	Team	Year	Position	Hometown/Previous School
Sarina Baker	St. Catherine	Fy.	Forward	Plymouth, Minn./Minnehaha Academy
Alley Fisher	Concordia	Fy.	Guard	Fargo, N.D./South
Jordan Sammons	Hamline	Fy.	Guard	Burnsville, Minn./Apple Valley
Anna Smith	St. Thomas	Fy.	Forward	Bloomington, Minn./Jefferson
Skylar Tsutsui	Carleton	Fy.	Guard	Northridge, Calif./Harvard Westlake School

2011-2012 Honorable Mention All-Conference

Name	Team	Year	Position	Hometown/Previous School
Ali Johnson	St. Thomas	Sr.	Forward	St. Louis Park, Minn.
Alexandra Lippert	Concordia	So.	Center	Willmar, Minn.
Kara Poirier	Hamline	Jr.	Guard	Eau Claire, Wis./Regis
Jessica Rene	Macalester	Sr.	Guard	Eau Claire, Wis./Memorial
Abby Rothenbuehler	Gustavus	Jr.	Forward	North Mankato, Minn./Mankato West
Jordan Sammons	Hamline	Fr.	Guard	Burnsville, Minn./Apple Valley
Kelly Swenson	Bethel	Jr.	Guard	Dawson, Minn./Dawson-Boyd
Skylar Tsutsui	Carleton	Fr.	Guard	Northridge, Calif./Harvard Westlake School
Brittany Zins	Augsburg	Jr.	Forward	Bloomington, Minn./Kennedy

2011-12 All-MIAC Sportsmanship Team

Augsburg - Nikki Borkhuis (Sr., Watertown, S.D.)
Bethel - Nicole Berscheid (So. Holdingford, Minn.)
Carleton - Megan Bakken (Jr., Waterville, Minn./Waterville-Elysian-Morristown)
Concordia - Andrea Benjamin (Sr., Tuscon, Ariz./Ironwood Ridge)
Gustavus - Collen Ruane (Sr., Edina, Minn./Benilde-St. Margaret's)
Hamline - Kara Poirier (Jr., Eau Claire, Wis., Ga./Regis)
Macalester - Shannon Rene (Sr., Eau Claire, Wis./Memorial)
Saint Benedict - Cassie Dorschner (Sr., Kasson, Minn./Kasson-Mantorville)
St. Catherine - Megan Zillmer (Sr., Crosby, Minn./Crosby-Ironton)

Saint Mary's - Emily Dewitt (Sr., Lino Lakes, Minn./Centennial)
St. Olaf - Erin Haglund (Jr., Hastings, Minn.)
St. Thomas - Haley Loesch (Sr., Northfield, Minn.)